

P3D SERIES DOSING UNIT



Pure Advantages

- Optimal Disinfection with 99.5% Pure ClO₂
- pH Neutral Solution
- Digital User-Interface for Operation
- Space-Efficient
- No Hefty Capital Investment Needed
- No THM's or HAA5's

The P3D is a state-of-the-art dosing unit designed to integrate seamlessly with water systems in small to medium-sized hospitals. Drawing from totes of our premium 3000 ppm pure ClO₂, the P3D precisely doses and injects chlorine dioxide into various water systems, from hot water recirculating loops to domestic cold water, ensuring consistent and optimal disinfection.

For hot water loops and small cooling towers, the unit can be paired with a residual feedback analyzer, timer, or the pump's built-in batch dosing logic for optimal dosing. For domestic cold water treatment, flow-pacing is employed using a flow signal combined with the pump's controller.

The P3D is the ideal solution for smaller-to-medium sized hospitals and medical buildings that prioritize the safety and quality of their water supply. Its compact design and efficient operation make it a perfect fit for facilities with lower volume water utilization, without compromising on water quality.

PureLine
P3D

Specifications

Capacity: 0-20lbs of ClO₂ per day | (0-150L/hr of Pure3000 solution)

Electrical Power: 110VAC 1ph 10A standard | (220VAC 1ph 10A optional)

Inlet Chemical Connections: 1-2 1/2" FNPT

Outlet Chemical Connections: 1-2 1/2" FNPT

Cabinet: Polypropylene

Dimensions: 25.375" x 25" x 35.75" (WxDxH)

Weight: 80lbs

Experience the pinnacle of water treatment technology with the P3D, a cutting-edge chlorine dioxide dosing pump cabinet system designed to cater to the unique demands of small potable water systems, such as those in small hospitals and medical buildings.

Precise Dosing, Unparalleled Performance:

The P3D system is engineered for excellence, featuring up to two independent, high-precision, digitally controlled chemical metering pumps. These direct-drive pumps ensure the accurate delivery of Pure3000 chlorine dioxide solution to both domestic and industrial water systems. Whether you require precise dosing for domestic water or intricate industrial processes, the P3D has you covered.

Control at Your Fingertips:

Each P3D unit comes pre-supplied, prewired, and expertly plumbed to accommodate various control options, including flow pacing (4-20mA or Pulse Flow Signal), residual feedback control, remote start/stop, and manual operation. The metering pumps utilize state-of-the-art brushless DC motors for speed control, offering an impressive turndown ratio of up to 1000:1. Our systems can handle a range of flow rates, from as low as 7.5ml/hr to a substantial 150L/hr, with injection pressures reaching up to 150psig.

Versatility in Application:

The P3D system is your versatile solution for dispensing Pure3000 chlorine dioxide solution across a multitude of water systems. Whether it's domestic cold water, hot water loops, small cooling towers, chilled loops, or clean-in-place systems, our system ensures top-tier performance.

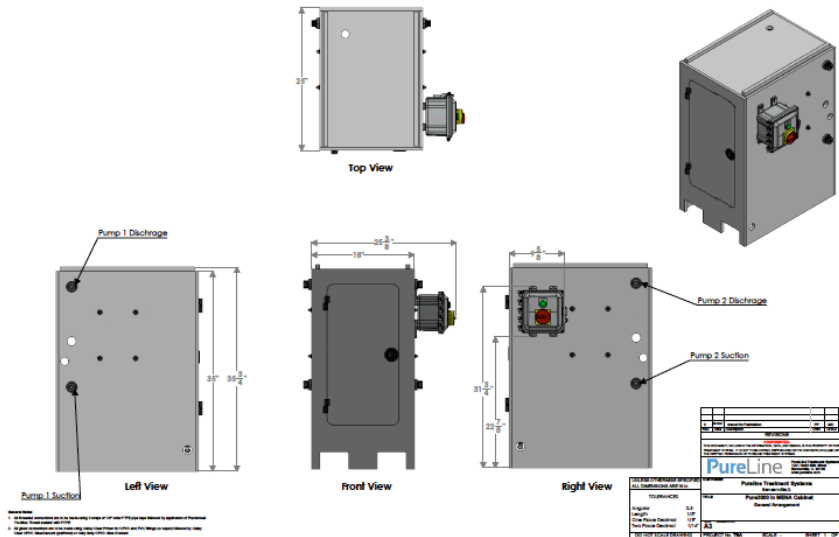
Streamlined and Stackable:

Efficiency meets flexibility with our stackable cabinet design. When multiple injection points are required, these cabinets stack seamlessly, minimizing your footprint and maximizing functionality. We believe in making your life easier.

Safety and Reliability Redefined:

Your peace of mind is our priority. The P3D system is equipped with indicator lights and fault signals, enabling effortless monitoring of system status. It includes isolation valves, chemical feed strainers, and back pressure valves to ensure consistent operation and facilitate hassle-free maintenance. Additionally, our pumps feature built-in leak detection and overload sensors to preemptively detect deadhead conditions, stopping the pump before any harm occurs to it or the connected plumbing.

Cabinet General Arrangement



NSF/ANSI/
CAN 60 - 2021:
Drinking Water
Treatment
Chemicals

Experts in the generation and application of chlorine dioxide

Pureline offers a complete line of chlorine dioxide products, solutions and accessories.



PureLine
847 963 8465
info@pureline.com

1241 N. Ellis Street
Bensenville, IL 60106
pureline.com